


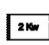


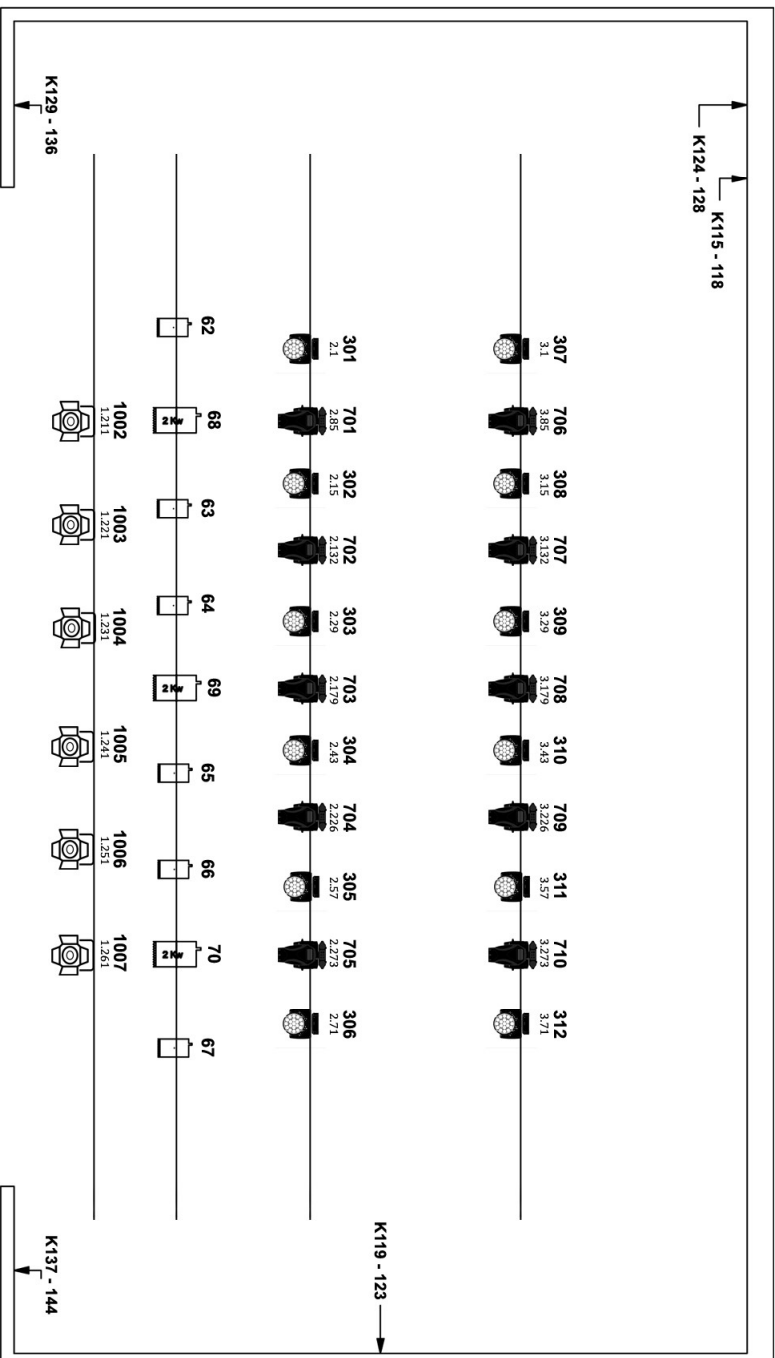


-  **Martin MAC AURA XB**  
Standard mode - 14 channels
-  **Vari-Lite VL2600 Profile**  
Extended mode - 4/7 channels
-  **Martin Mac Encore Performance**  
38 channels
-  **2K Strand Cadenza F Fresnel**
-  **1K Strand Harmony F Fresnel**
-  **Cameo F2 FC**  
DMX mode 10 channel HSI-CCT

Follow spots      K181 - K182  
2 x Robert Juliat Alex 2/2500W 7-14,5°

 **1K Strand Harmony 1/5/28 Profile**

 **750W ETC CE Source 4 Zoom 15/30**



Motorised bar (max 200 kg)

Bridge 2  
K21 - 40

Bridge 1  
K01 - 20

